

# Two-Bedroom Reverse



## Specifications:

2 Bedrooms, 2.5 Baths

**General** Energy-efficient heat pump  
Quick recovery water heater  
Fire suppression sprinkler system  
Separate cart garage with lockers

### EXTERIOR

**Windows** Andersen  
**Siding** Cedar shingles  
**Roofing** Architectural grade 425-lb. fiberglass shingles

### INTERIOR

**Foyer** Heartpine wood floor with natural finish  
Washer and dryer

**Kitchen** Tile floor  
Painted Maple cabinets  
Solid-surface counter top  
Under cabinet lighting and recessed lighting  
Stainless steel appliances, to include dishwasher, range, microwave and 22.2 cu.ft. refrigerator with icemaker

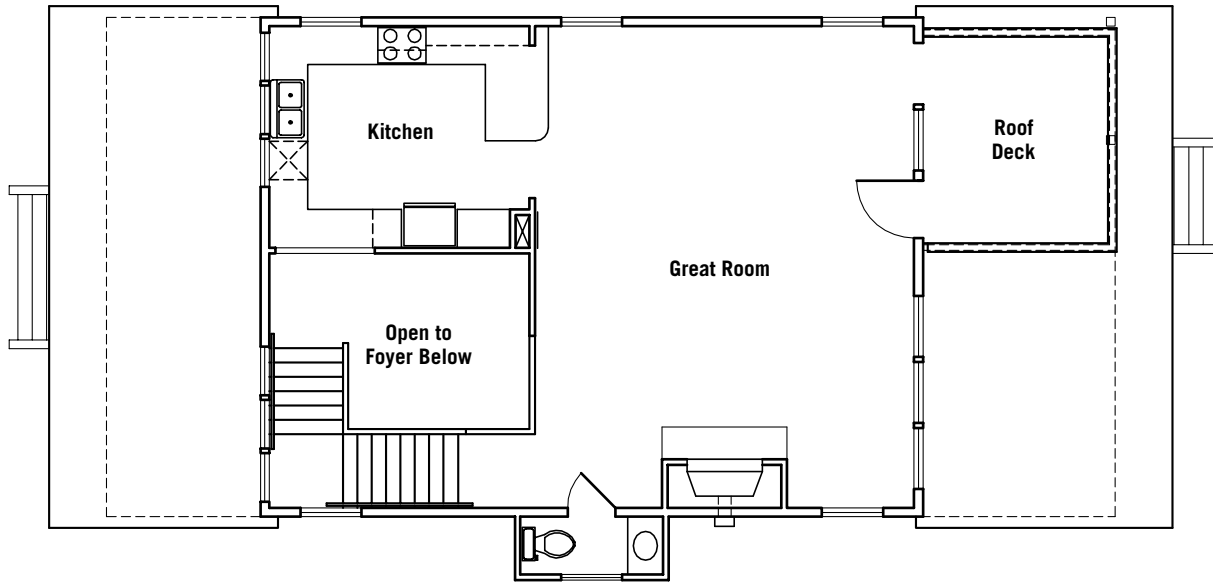
**Greatroom** Heartpine wood floor with natural finish  
Ceiling fan  
Recessed lighting and wall sconce  
Pickled wood walls  
Gas fireplace with built-in entertainment cabinet  
32" Television and VCR  
Surround sound 5-speaker system including AM/FM, CD player, and remote  
Portable telephone

**Bedrooms** Carpeted floor  
Ceiling fan  
Wall sconce lighting  
20" TV/VCR with wireless headset in primary master  
13" TV/VCR in secondary master  
Clock radio with CD player  
Shared screened porch

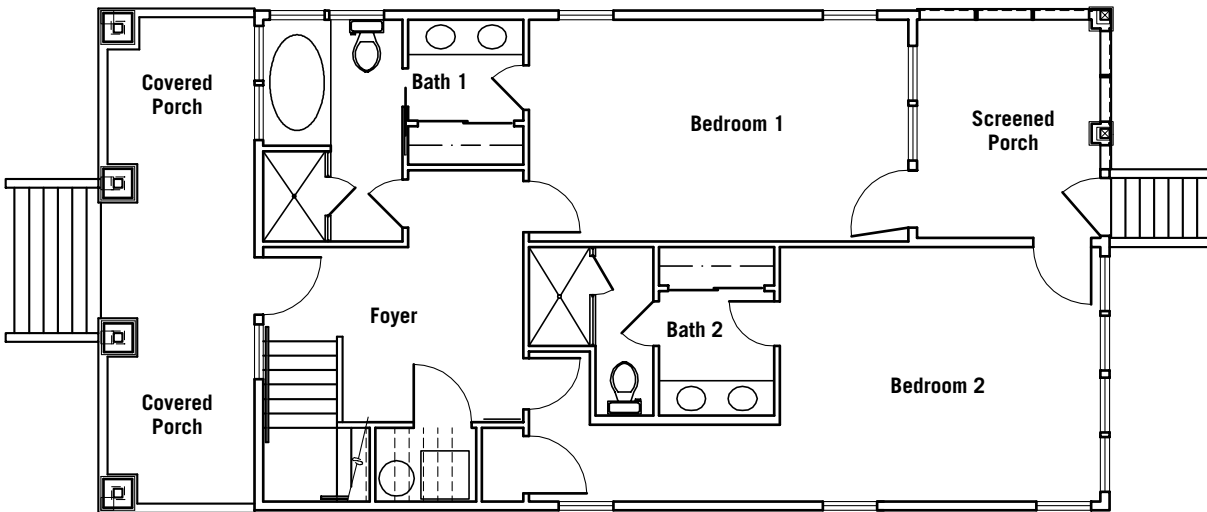
**Baths** Ceramic tile floors  
Natural maple cabinets with solid-surface vanity top  
Whirlpool bath and tile shower with glass door enclosure in primary master bath  
Tile shower with glass door enclosure in secondary master bath



# Two-Bedroom Reverse Floorplan



Second Floor



First Floor

# Three-Bedroom Reverse



## Specifications:

3 Bedrooms, 3.5 Baths

**General** Energy-efficient heat pump  
Quick recovery water heater  
Fire suppression sprinkler system  
Separate car garage with lockers

### EXTERIOR

**Windows** Andersen  
**Siding** Cedar shingle  
**Roofing** Architectural grade 425-lb. fiberglass shingles

### INTERIOR

**Foyer** Heartpine wood floor with natural finish  
Washer and dryer

**Kitchen** Tile floor  
Painted Birch cabinets  
Solid-surface counter top  
Under cabinet lighting and recessed lighting  
Stainless steel appliances to include dishwasher, range, microwave and 22.2 cu.ft. refrigerator with ice maker

**Greatroom** Heartpine wood floor with natural finish  
Ceiling fan, recessed lighting and wall sconce  
Pickled wood walls

Gas fireplace with built-in entertainment cabinet  
32" Television and VCR  
Surround sound 5-speaker system with AM/FM, CD player and remote  
Portable telephone

### Master Bedrooms

Carpeted floor  
Ceiling fan and wall sconce lighting  
20" TV/VCR with wireless headset in primary master  
13" TV/VCR in secondary master  
Clock radio with CD player

### Master Baths

Ceramic tile floors  
Painted Maple cabinets with solid-surface vanity top  
Whirlpool bath and tile shower with glass door enclosure in primary master bath  
Tile shower with glass door enclosure in secondary master bath

### Guest Bedroom

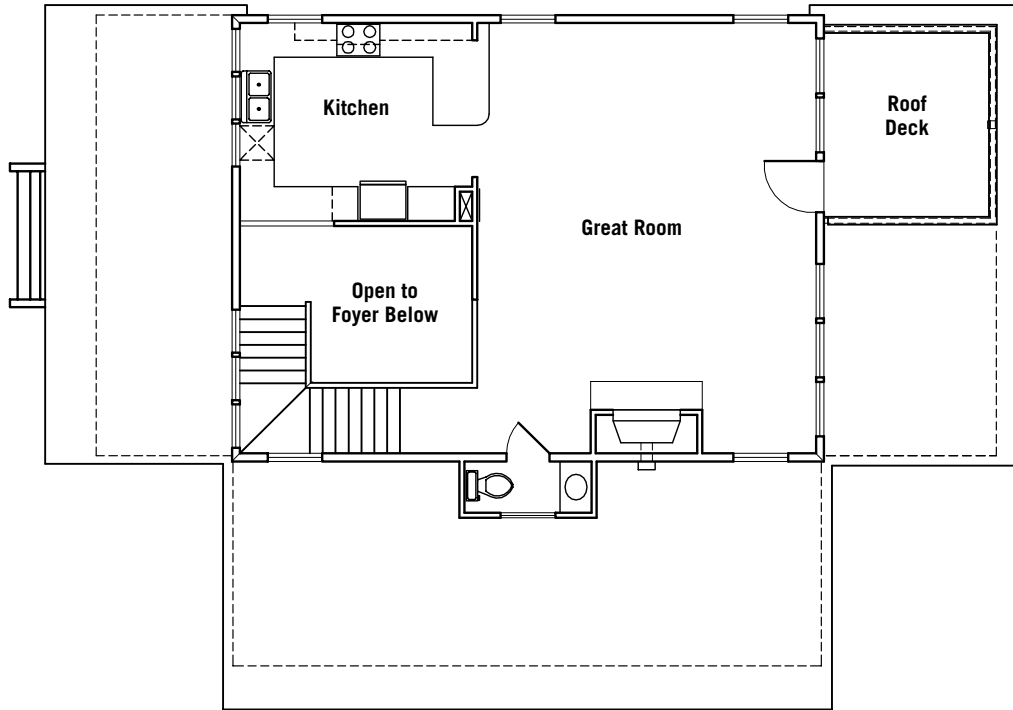
Carpeted floor  
Ceiling fans and wall sconce lighting  
20" TV/VCR  
Clock radio with CD player

### Guest Bath

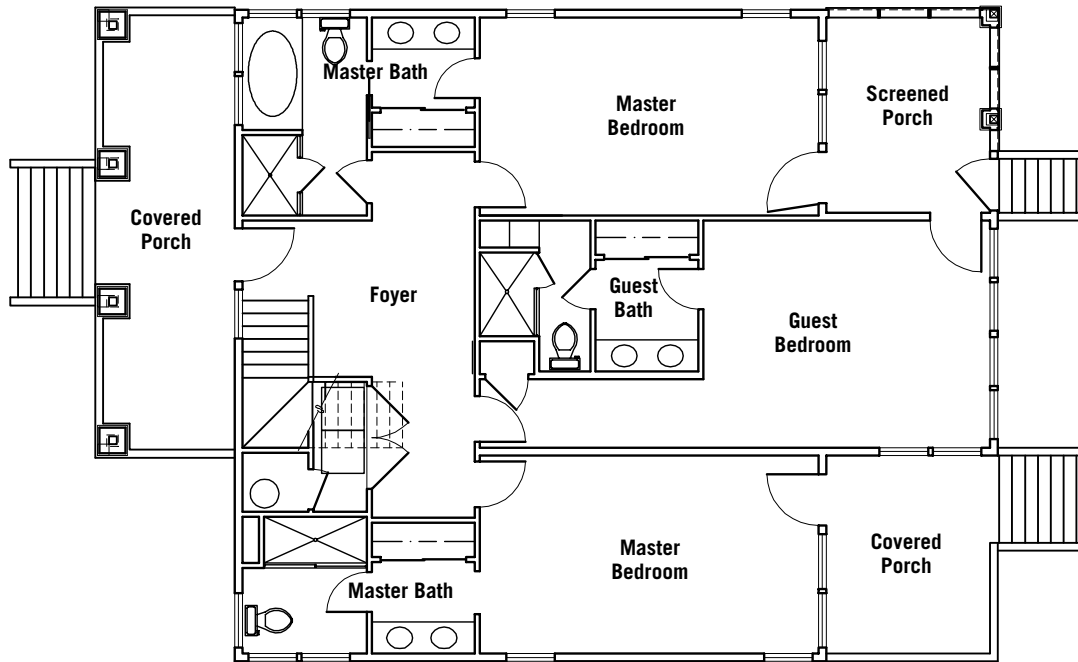
Ceramic tile floor  
Painted Maple cabinets with solid-surface vanity top  
Shower with glass door enclosure



# Three-Bedroom Reverse Floorplan



Second Floor



First Floor

# Three-Bedroom Traditional



## Specifications:

3 Bedrooms, 3.5 Baths

**General** Energy-efficient heat pump  
Quick recovery water heater  
Fire suppression sprinkler system  
Separate cart garage with lockers

### EXTERIOR

**Windows** Andersen  
**Siding** Cedar shingles  
**Roofing** Architectural grade 425-lb. fiberglass shingles

### INTERIOR

**Foyer** Heartpine wood floor with natural finish  
**Kitchen** Tile floor  
Painted Birch cabinets  
Solid-surface counter top  
Under cabinet lighting and recessed lighting  
Stainless steel appliances to include dishwasher, range, microwave and 22.2 cu.ft. refrigerator with icemaker  
**Greatroom** Heartpine wood floor with natural finish  
Ceiling fan, recessed lighting and wall sconce  
Pickled wood walls

Gas fireplace with built-in entertainment cabinet  
Flat screen Television and VCR  
Surround sound 5-speaker system with AM/FM, CD player and remote  
Portable telephone

**Upstairs Hall** Washer & dryer

**Master Bedroom** Carpeted floor  
Ceiling fan and wall sconce lighting  
20" TV/VCR with wireless headset in primary master  
Clock radio with CD player  
Open deck

**Master Bath** Ceramic tile floors  
Stained Maple cabinets with solid-surface vanity top  
Whirlpool bath and tile shower with glass door enclosure

**Guest Bedrooms** Carpeted floor  
Ceiling fans and wall sconce lighting  
13" TV/VCR  
Clock radio with CD player

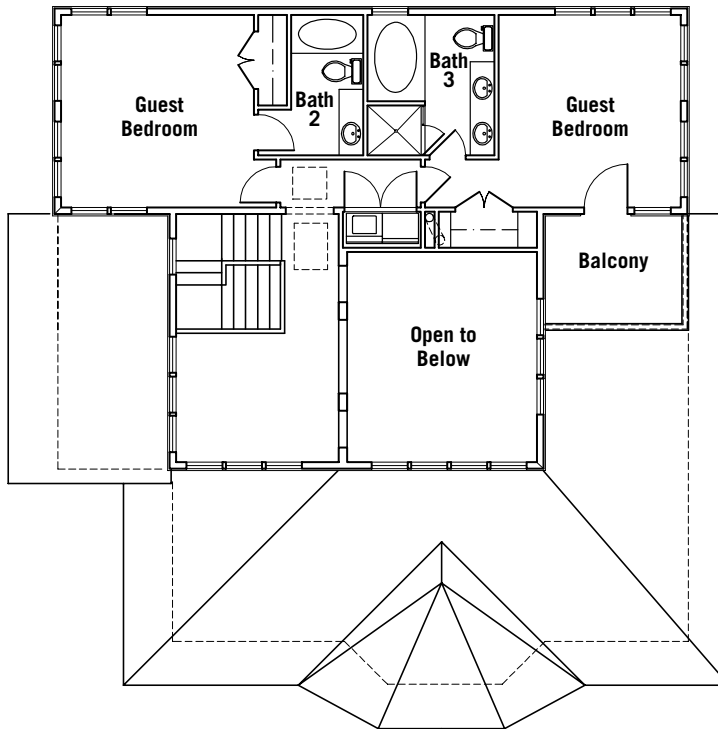
**Bath 2** Ceramic tile floor  
Stained Maple cabinets with solid-surface vanity top  
Tub and shower combination with glass door enclosure

**Bath 3** Ceramic tile floor  
Stained Maple cabinets with solid-surface vanity top  
Whirlpool bath and tile shower with glass door enclosure

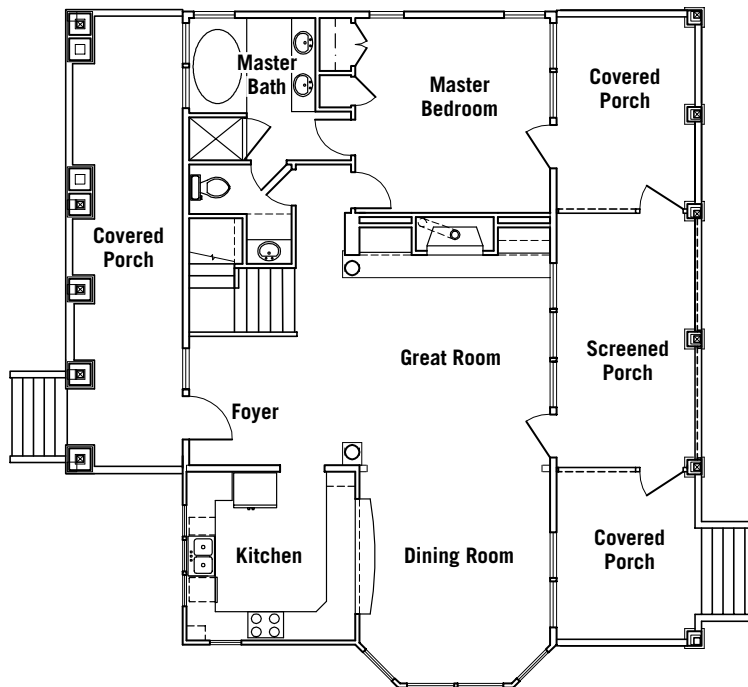


Renderings and plans shown are not to scale and are intended for illustrative purposes only. Specifications are approximate and are subject to change without notice at the discretion of the developer.

# Three-Bedroom Traditional Floorplan



Second Floor



First Floor



## Specifications:

1 Bedroom, 1 Bath

**General** Energy-efficient split-system heat pump  
Quick recovery water heater  
Fire suppression sprinkler system

### EXTERIOR

**Windows** Andersen  
**Siding** Cedar shingles  
**Roofing** Architectural grade 425-lb. fiberglass shingles

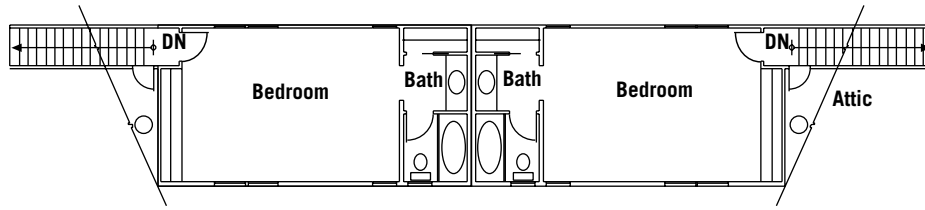
### INTERIOR

**Kitchenette** Heartpine wood floor with natural finish  
Painted Maple cabinets  
Solid surface counter top  
Mini-refrigerator

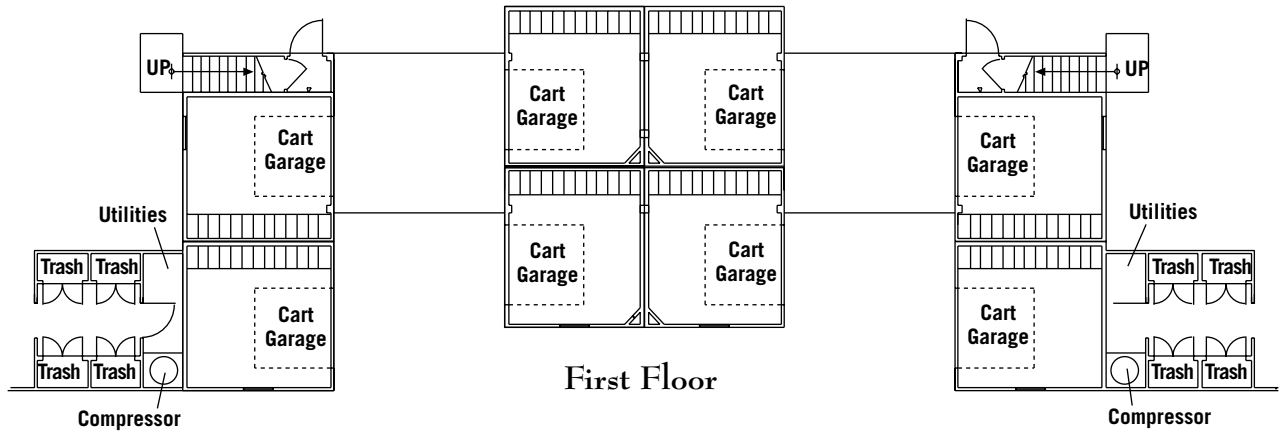
**Bedroom** Heartpine wood floor with natural finish  
Ceiling fan  
20" TV/VCR  
Clock radio with CD player  
Portable telephone

**Bath** Ceramic tile floor  
Natural Maple cabinets with solid-surface  
vanity top  
Tub and shower combination

# Crofter Floorplan



Second Floor



First Floor